

PLANTA DE GARA E DESPEJO  
ANNEXA AO PROCESSO N<sup>o</sup>

AV. CONSELHEIRO NEBIA N<sup>o</sup> 464

PROPRIETARIO

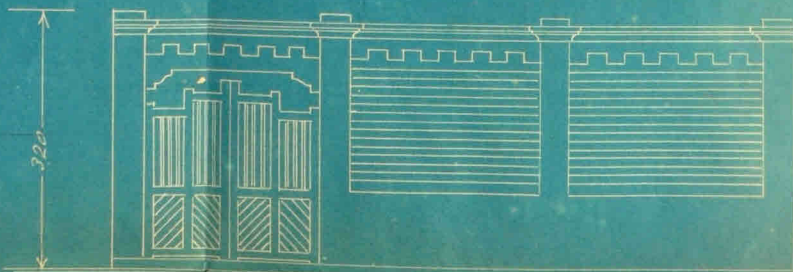
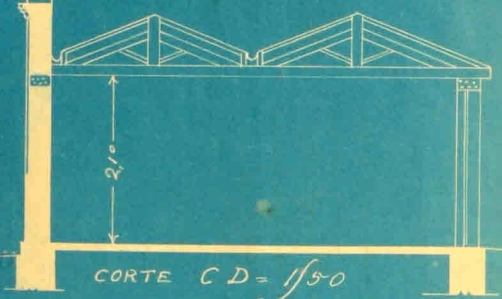
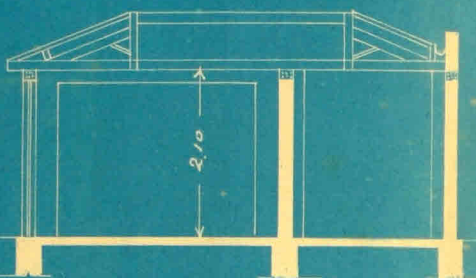
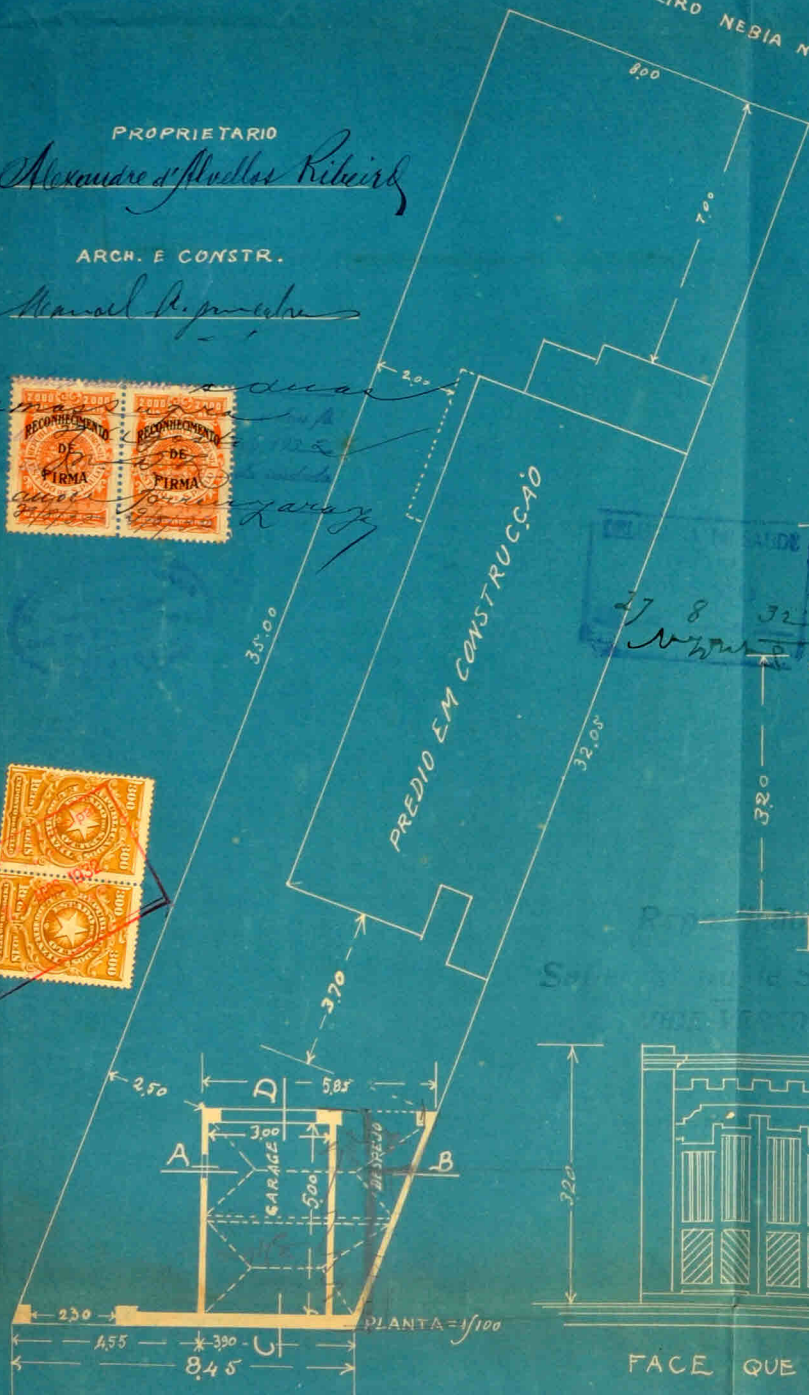
Alexandre d'Almeida Ribeiro

ARCH. E CONSTR.

Manoel P. Pereira



PREDIO EM CONSTRUÇÃO



FACE QUE DA PARA A RUA LUIZ DE CAMOES

RUA LUIZ DE CAMOES